

MONTHLY MEMBERSHIP PROGRESS REPORT

LOCATION TEXAS

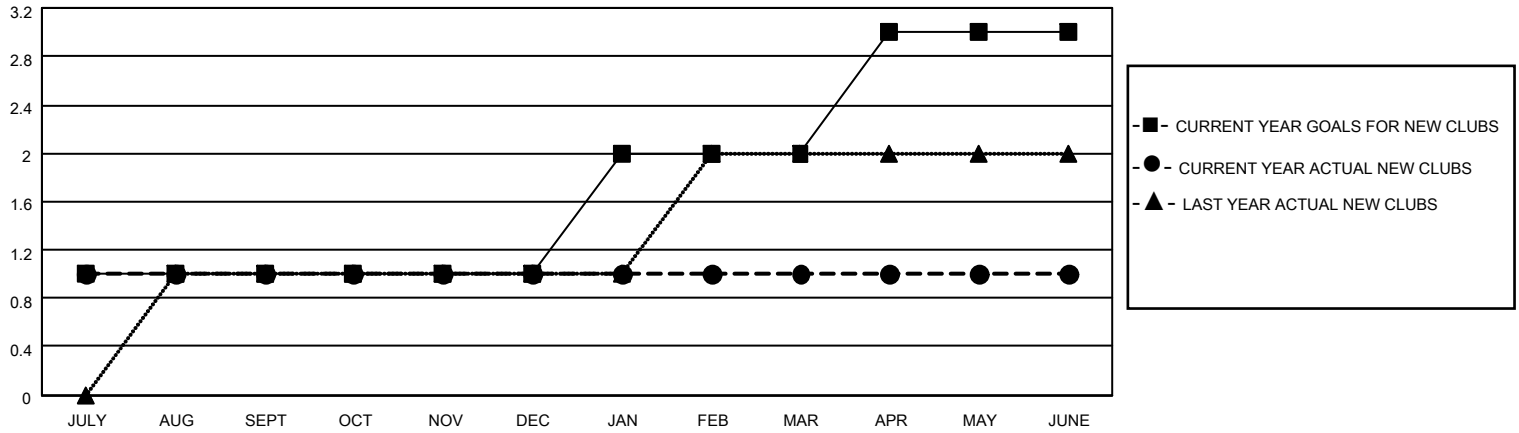
District 2 S3

Results as of: 6/30/2022

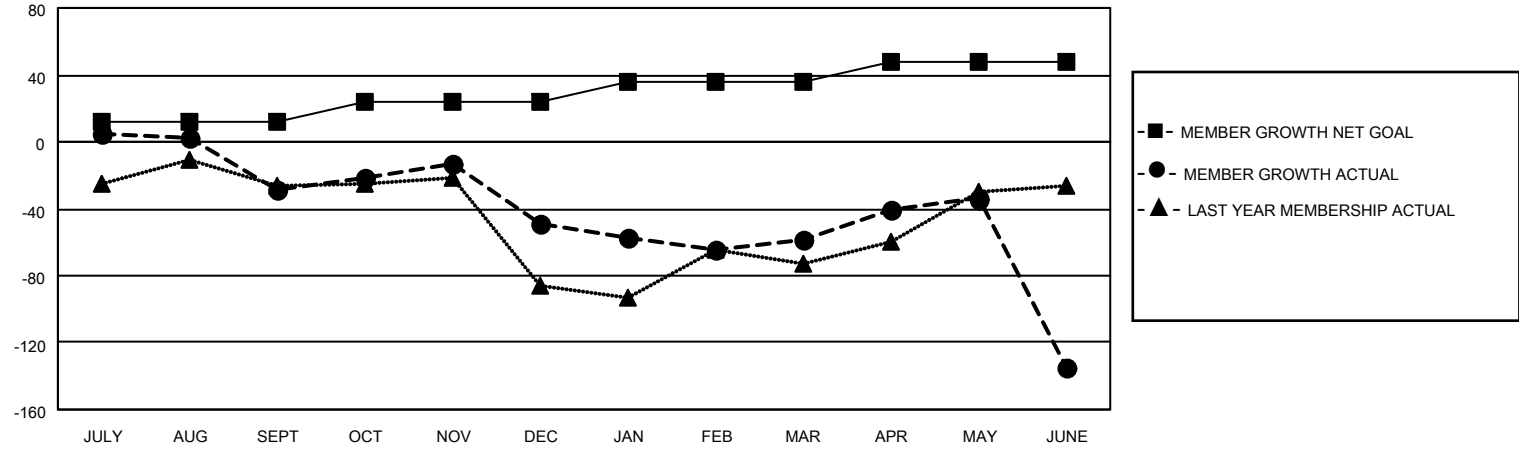
Clubs			
RESULTS FOR 2021-2022			
QUARTER	NEW CLUB GOAL	NEW CLUBS	DROPPED CLUBS
JULY/AUG/SEPT	1	1	0
OCT/NOV/DEC	0	0	0
JAN/FEB/MAR	1	0	0
APR/MAY/JUNE	1	0	2

Members			
RESULTS FOR 2021-2022			
QUARTER	MEMBER GROWTH NET GOAL	MEMBER GROWTH ACTUAL	DROPPED MEMBERS ACTUAL (including transfers)
JULY/AUG/SEPT	12	86	104
OCT/NOV/DEC	12	46	62
JAN/FEB/MAR	12	40	46
APR/MAY/JUNE	12	91	164

GOALS AND ACTUAL NEW CLUBS CUMULATIVE



GOALS AND ACTUAL MEMBERS CUMULATIVE



DROPPED CLUBS: 2	
DROPPED MEMBERS	
DECEASED	26
CLUB CANCELLED	42
OTHER	308
TOTAL	376

36 CLUBS OF 51 ADDED 1 OR MORE NEW MEMBERS

[CLICK HERE FOR CUMULATIVE MEMBERSHIP DATA](#)

<u>GENDER DISTRIBUTION</u>	
MALE	1,034 (61.62%)
FEMALE	643 (38.32%)
NON BINARY	0 (0.00%)
PREFER NOT TO ANSWER	1 (0.06%)
<hr/>	
TOTAL FAMILY UNIT MEMBERS	282
<hr/>	
FAMILY MEMBERS PAYING HALF DUES	144